

# NFDI4MedicalPhotonics: Research data infrastructure for photonic data and applications in medicine

Thomas Bocklitz<sup>1,2</sup>, Markus Becker, Matthias Razum, Christian Bonatto Minella, Jens Hellwage, Jürgen Popp

<sup>1</sup> Institute of Physical Chemistry and Abbe Center of Photonics, University Jena, Germany

<sup>2</sup> Leibniz Institute of Photonic Technology (IPHT), Mitglied des Leibniz-Forschungsverbunds "Gesundheitstechnologien", Jena, Germany



FRIEDRICH-SCHILLER-  
UNIVERSITÄT  
JENA



# NFDI4BIMP: NFDI4 Biological Imaging and Medical Photonics

Elisa May, Stefanie Weidtkamp-Peters, Thomas Bocklitz<sup>1,2</sup>

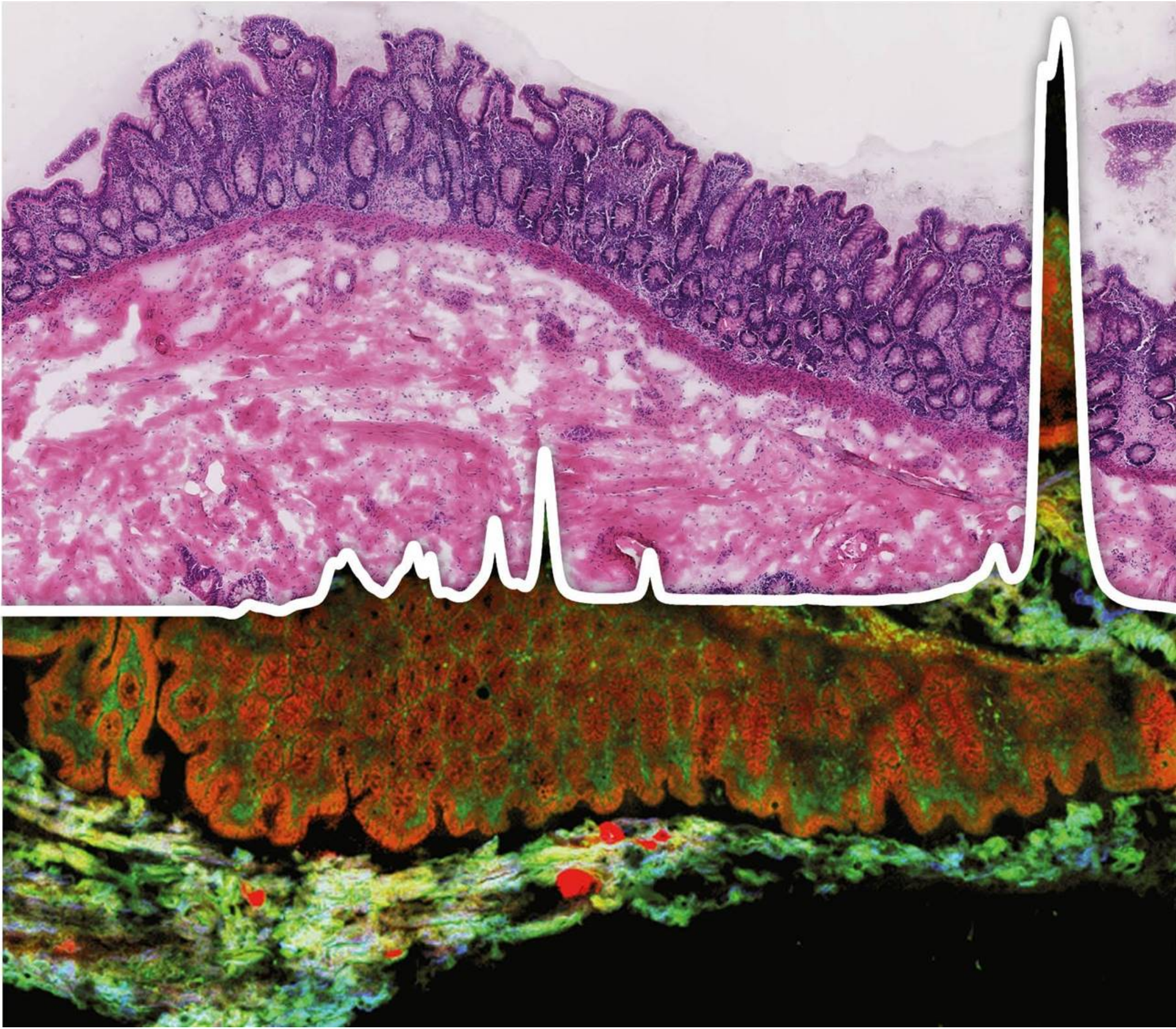
<sup>1</sup> Institute of Physical Chemistry and Abbe Center of Photonics, University Jena, Germany

<sup>2</sup> Leibniz Institute of Photonic Technology (IPHT), Mitglied des Leibniz-Forschungsverbunds "Gesundheitstechnologien", Jena, Germany



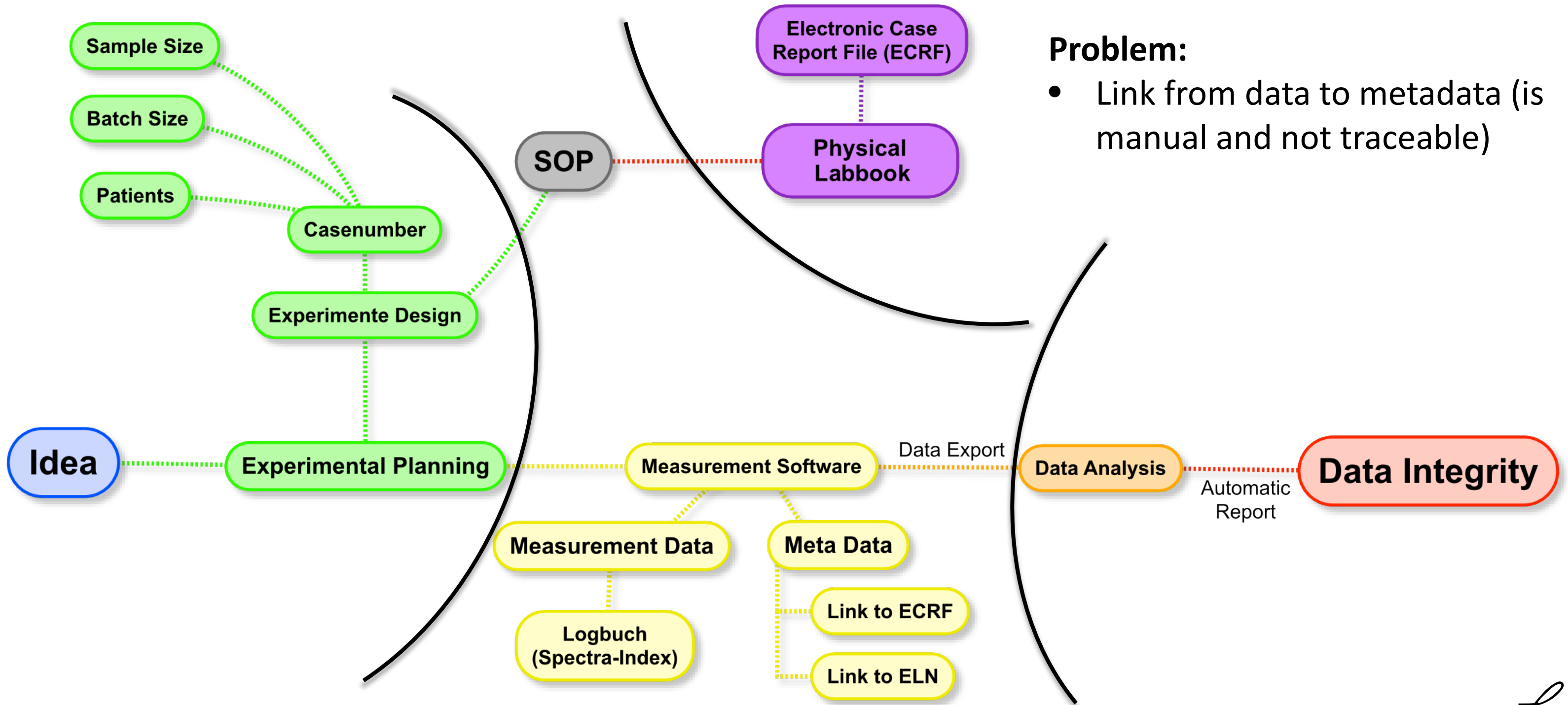


# Medical Photonics





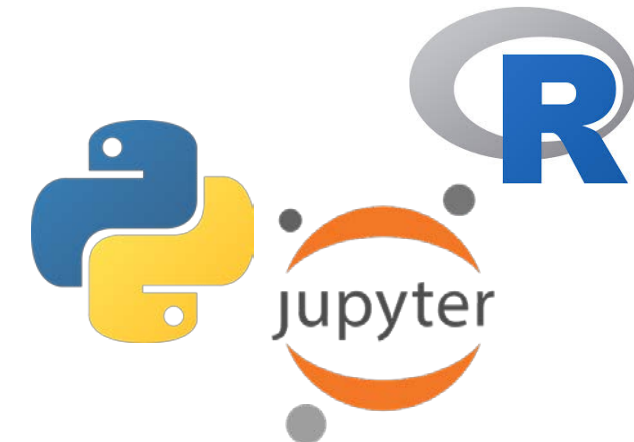
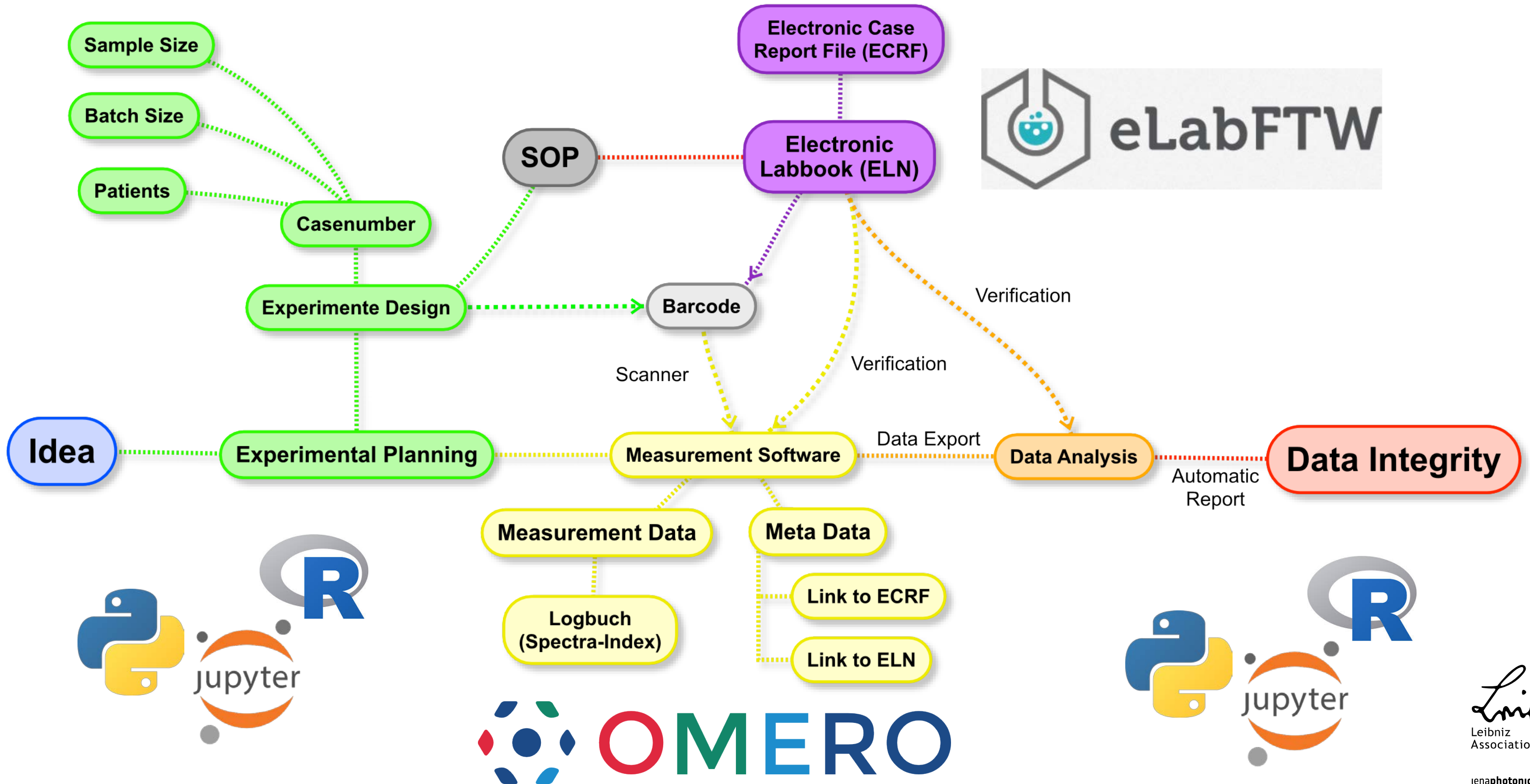
# General procedure of a study in medical photonics



## Problem:

- Link from data to metadata (is manual and not traceable)

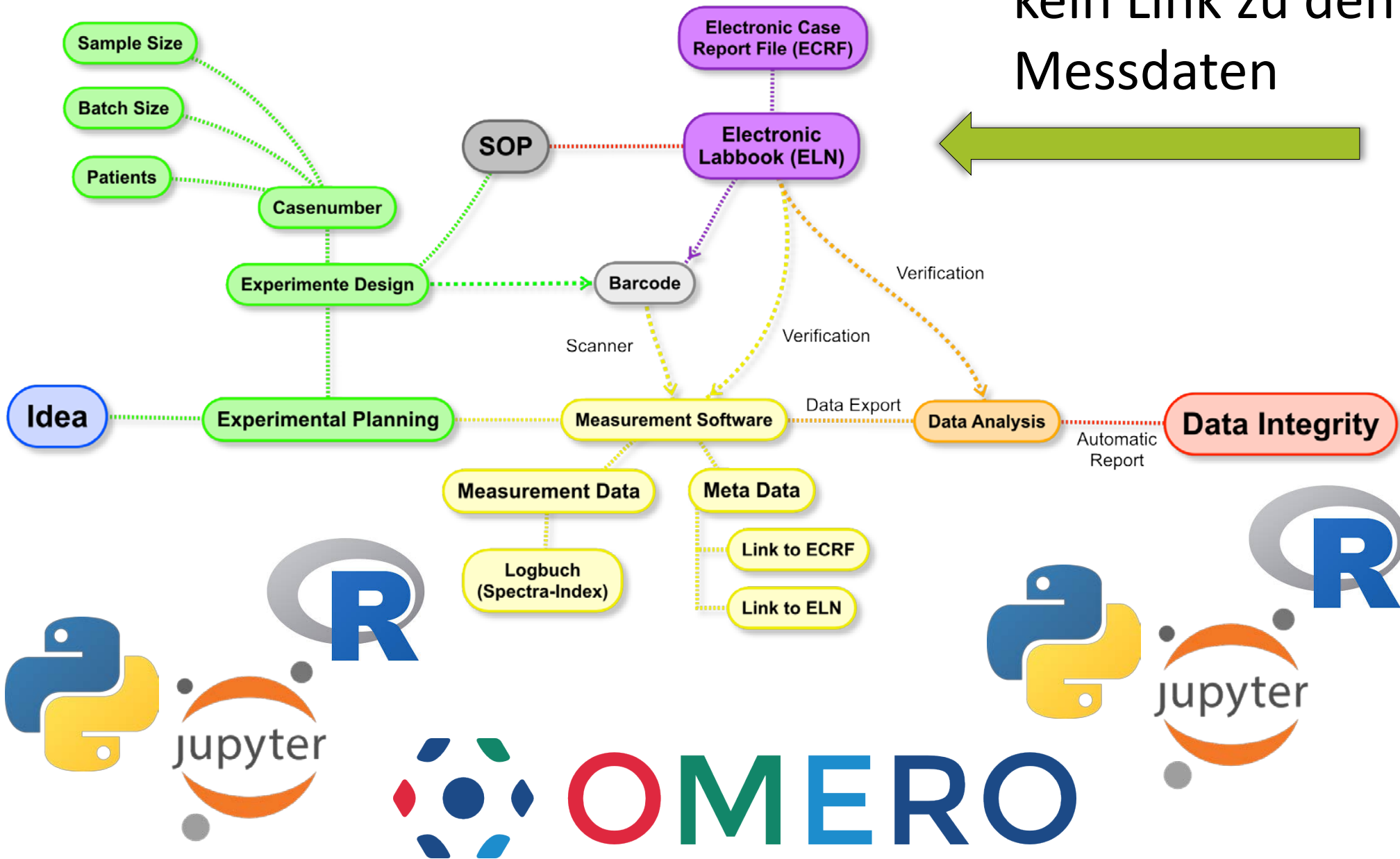
# Idea for data management in medical photonics



# All parts exist, why aren't they used?



- Kein ELN und kein Link zu den Messdaten



0390 - 98  
BOOK PAGE

TITLE/TITEL PROJECT/PROJEKT

Continued From Page/Fortsetzung von Seite:

|    | Probe     | 1 | 2 | 3 | 4 |
|----|-----------|---|---|---|---|
| 5  | Dampf     |   |   |   |   |
| 10 | allgemein |   |   |   |   |
| 15 | Scan      |   |   |   |   |
| 20 | 14.11.03  |   |   |   |   |
| 25 | P01_01_01 |   |   |   |   |
| 30 | P01_01_01 |   |   |   |   |
| 35 | P01_01_01 |   |   |   |   |
| 40 | -11-      |   |   |   |   |
| 45 | P02_02_01 |   |   |   |   |
| 50 | -11-      |   |   |   |   |
| 55 | P03_01_01 |   |   |   |   |
| 60 | -11-      |   |   |   |   |
| 65 | P04_01_01 |   |   |   |   |
| 70 | P01_01_02 |   |   |   |   |
| 75 | P01_01_02 |   |   |   |   |
| 80 | P02_02_02 |   |   |   |   |
| 85 | P03_01_02 |   |   |   |   |

Signature/Unterschrift: \_\_\_\_\_ Date/Datum: \_\_\_\_\_

Proprietary information belonging to ipht Jena

